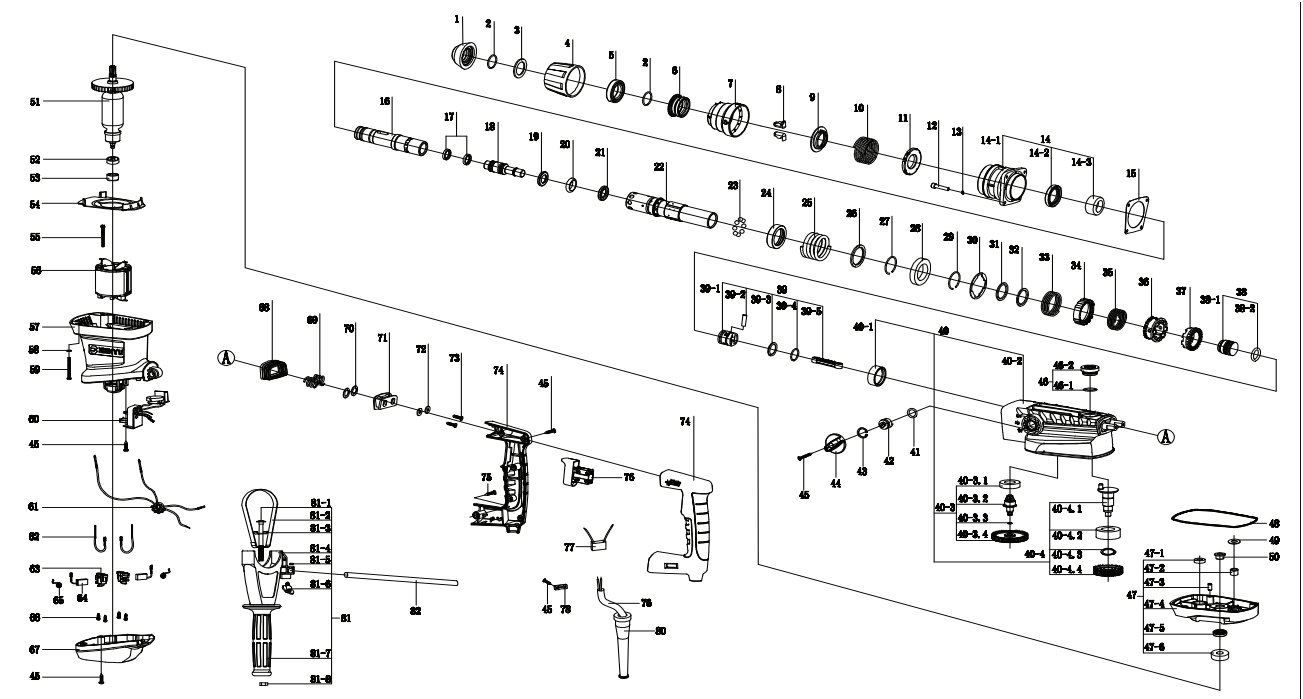


Exploded drawing of Rotary Hammer RDP-HD55



Parts List Rotary Hammer RDP-HD55

SPARE PARTS LIST FOR RDP-HD55			
NO	DESCRIPTION	NO	DESCRIPTION
1	TOOL HOLDER CAP	41	O-RING
2	RING SPRING	42	WHEEL
3	FLAT WASHER	43	RING
4	CHUCK COVER	44	SLECTOR KNOB ASSY
5	SPACER	45	SCREW ST3.9*16
6	CHUCK RING	46	OIL CAP ASSY
7	RELEASE COVER	46-1	OIL CAP O-RING
8	TOOL RETAINER	46-2	OIL CAP
9	SPRING GUIDE	47	GEAR HOUSING ASSY
10	COMPRESSION SPRING	47-1	608 BALL BEARING
11	SPRING GUIDE	47-2	HK1010 NEEDLE BEARING
12	SCREW M5*25	47-3	PIN
13	WASHER	47-4	GEAR HOUSING
14	BARREL COMPLETE ASSY	47-5	OIL SEAL
14-1	BARREL COMPLETE	47-6	6201 BALL BEARING
14-2	OIL SEAL	48	SEAL RING
14-3	61806 BALL BEARING	49	FLAT WASHER
15	WASHER	50	BUSHING
16	TOOL HOLDER	51	ARMATURE
17	O-RING	52	607 BALL BEARING
18	IMPACT BOLT	53	RUBBER BEARING SLEEVE
19	RING	54	AIR DELECTOR RING
20	RUBBER RING	55	SCREW ST3.9*16
21	RUBBER WASHER	56	FIELD
22	CYLINDER	57	MOTOR HOUSING
23	φ7 BALL	58	WASHER
24	BALL COVER	59	SCREW M5*60
25	COMPRESSION SPRING	60	
26	FLAT WASHER	61	INDCTOR
27	RING SPRING	62	CONNECTING CABLE
28	61907 BALL BEARING	63	BRUSH HOLDER ASSY
29	SNAP RING	64	CARBON BRUSH
30	BEARING WASHER	65	SPRING
31	SPRING WASHER 1	66	SCREW ST3.9*12
32	SPRING WASHER 2	67	REAR COVER
33	COMPRESSION SPRING	68	DUST COVER
34	CLUTCH SLEEVE	69	SPRING
35	COMPRESSION SPRING	70	WASHER
36	CLUTCH	71	HANDLE BASE
37	BEVEL GEAR	72	WSHER
38	STRIKER ASSY	73	BOLT M5*12
38-1	STRIKER	74	HANDLE
38-2	O RING	75	SCREW ST5.0*18
39	PISTON ASSY	76	SWITCH
39-1	PIN	77	CAPACITY
39-2	PISTON	78	CORD CLIP
39-3	O-RING	79	CORD
39-4	O-RING	80	CORD GUARD
39-5	CONNECTING ROD	81	AUXILIARY HANDLE ASSY
40	ANK HOUSING COMPLETE AS	81-1	M8 SCREW BOLT
40-1	BUSHING	81-2	CLAMPING BAND
40-2	CRANK HOUSING COMPLETE	81-3	STAMPING
40-3	PINION ASSY	81-4	CLAMP HOLDER
40-3.1	61904 BALL BEARING	81-5	BOLT M6
40-3.2	PINION	81-6	SCREW BUTTON
40-3.3	O-RING	81-7	AUXILIARY HANDLE
40-3.4	CYLINDERCIAL GEAR 61	81-8	BOLT M8
40-4	CRANK SHAFT ASSY	82	DEPTH GAUGE
40-4.1	CRANK SHAFT		
40-4.2	6004 BALL BEARING		
40-4.3	RETAINING RINGφ19		
40-4.4	HELICAL GEAR		